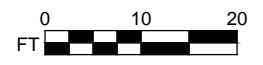


BASE FLOOR PLAN

Western Washington University (WWU) makes these documents available on an "as is" basis. All warranties and representations of any kind with regard to said documents are disclaimed, including the implied warranties of merchantability and fitness for a particular use. WWU does not warrant the documents against deficiencies of any kind.



TRUE NORTH

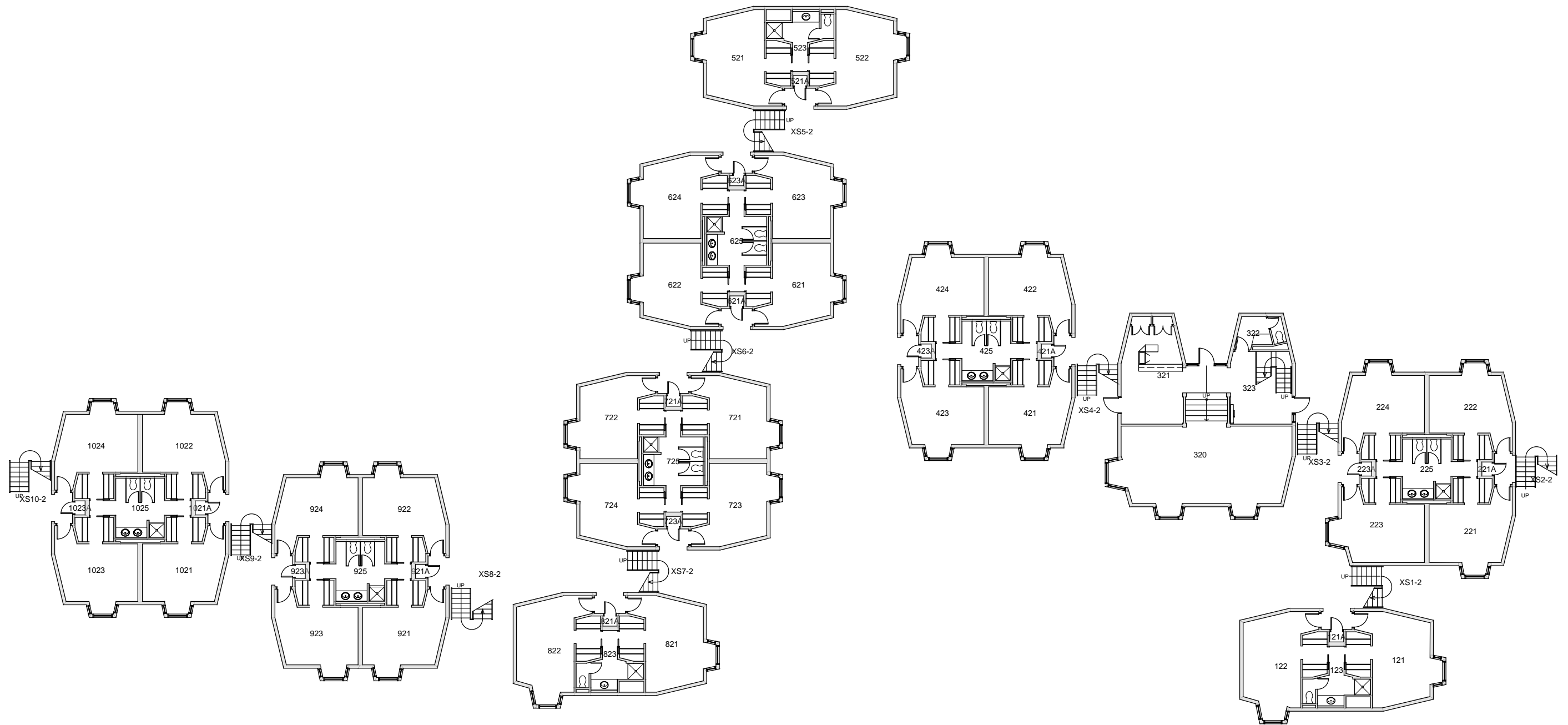


Last Drawing Revision: 08/28/2018

RIDGEWAY GAMMA
FLOOR 1

Last Sync With AIM: 08/28/2018

Building	RG
Floor #	1



BASE FLOOR PLAN

Western Washington University (WWU) makes these documents available on an "as is" basis. All warranties and representations of any kind with regard to said documents are disclaimed, including the implied warranties of merchantability and fitness for a particular use. WWU does not warrant the documents against deficiencies of any kind.

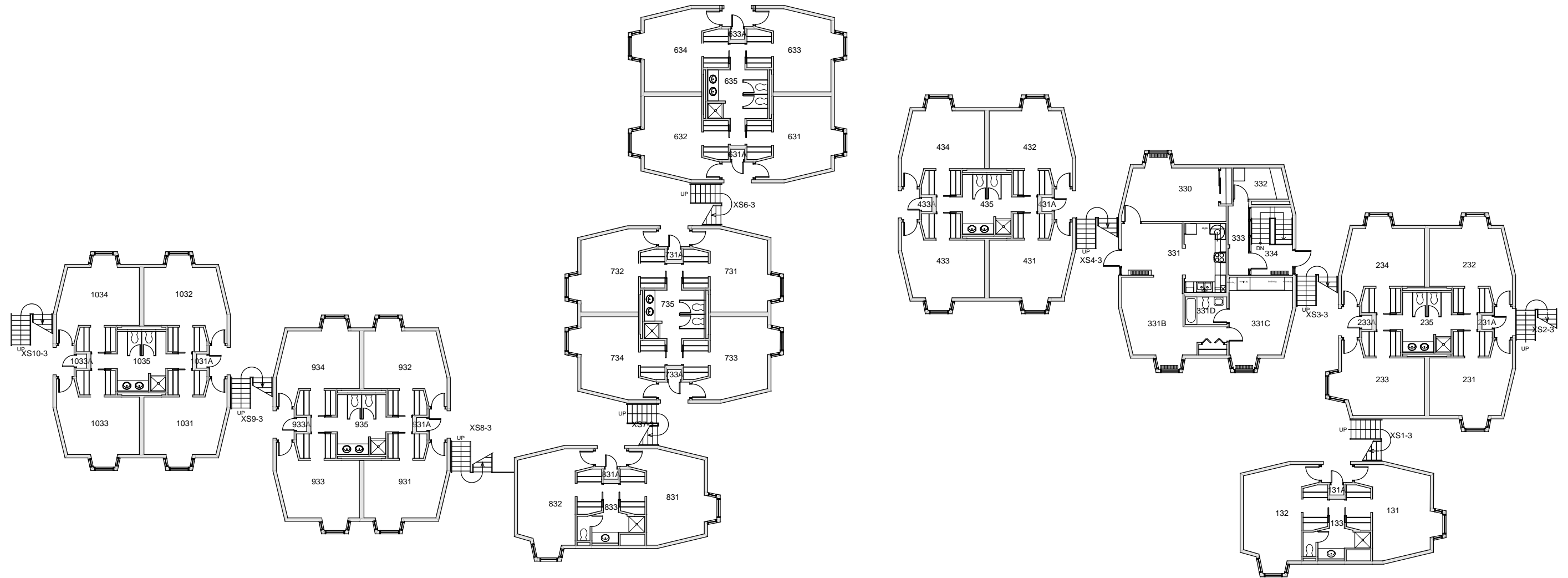
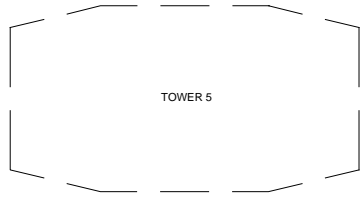


RIDGEWAY GAMMA FLOOR 2

Last Drawing Revision: 08/28/2018

Last Sync With AIM: 08/28/2018

Building	RG
Floor #	2



BASE FLOOR PLAN

Western Washington University (WWU) makes these documents available on an "as is" basis. All warranties and representations of any kind with regard to said documents are disclaimed, including the implied warranties of merchantability and fitness for a particular use. WWU does not warrant the documents against deficiencies of any kind.



TRUE NORTH

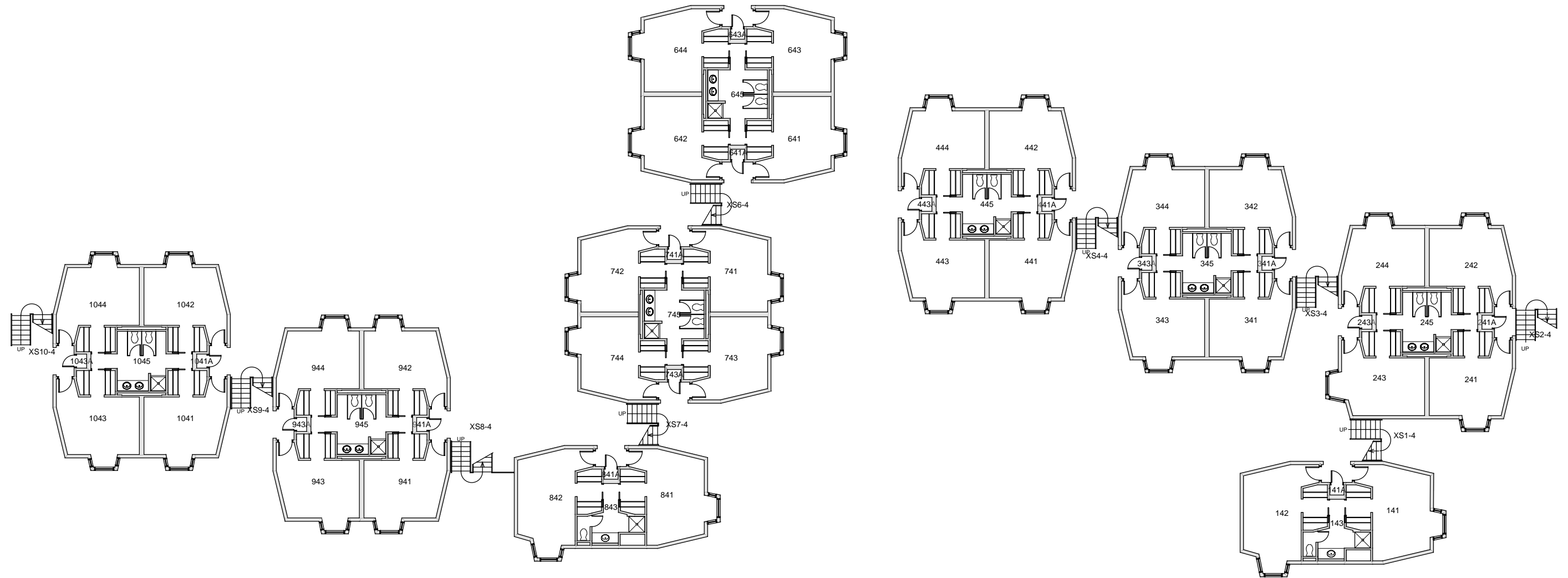
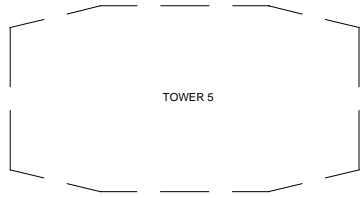


RIDGEWAY GAMMA
FLOOR 3

Last Drawing Revision: 08/28/2018

Last Sync With AIM: 08/28/2018

Building	RG
Floor #	3



BASE FLOOR PLAN

Western Washington University (WWU) makes these documents available on an "as is" basis. All warranties and representations of any kind with regard to said documents are disclaimed, including the implied warranties of merchantability and fitness for a particular use. WWU does not warrant the documents against deficiencies of any kind.



TRUE NORTH



RIDGEWAY GAMMA
FLOOR 4

Last Drawing Revision: 08/29/2018

Last Sync With AIM: 08/28/2018

Building	RG
Floor #	4