

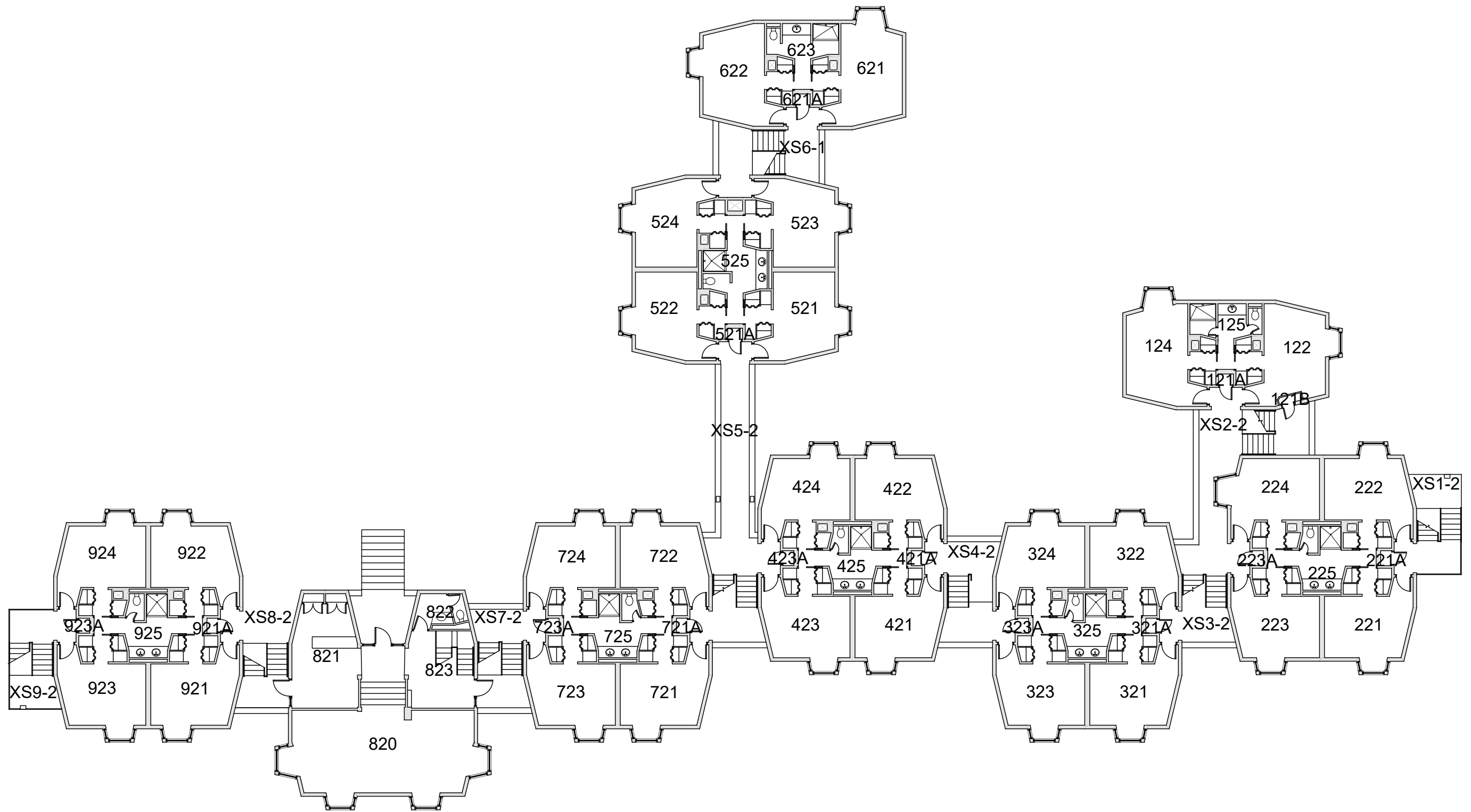
**BASE FLOOR PLAN**

Western Washington University (WWU) makes these documents available on an "as is" basis. All warranties and representations of any kind with regard to said documents are disclaimed, including the implied warranties of merchantability and fitness for a particular use. WWU does not warrant the documents against deficiencies of any kind.



|  |                                       |
|--|---------------------------------------|
| <p><b>RIDGEWAY BETA</b><br/>FLOOR 1</p>  | <p>Last Sync With AIM: 06/14/2023</p> |
| <p>Last Drawing Revision: 06/15/2023</p> |                                       |

|                               |
|-------------------------------|
| <p>Building<br/><b>RB</b></p> |
| <p>Floor #<br/><b>1</b></p>   |



**BASE FLOOR PLAN**

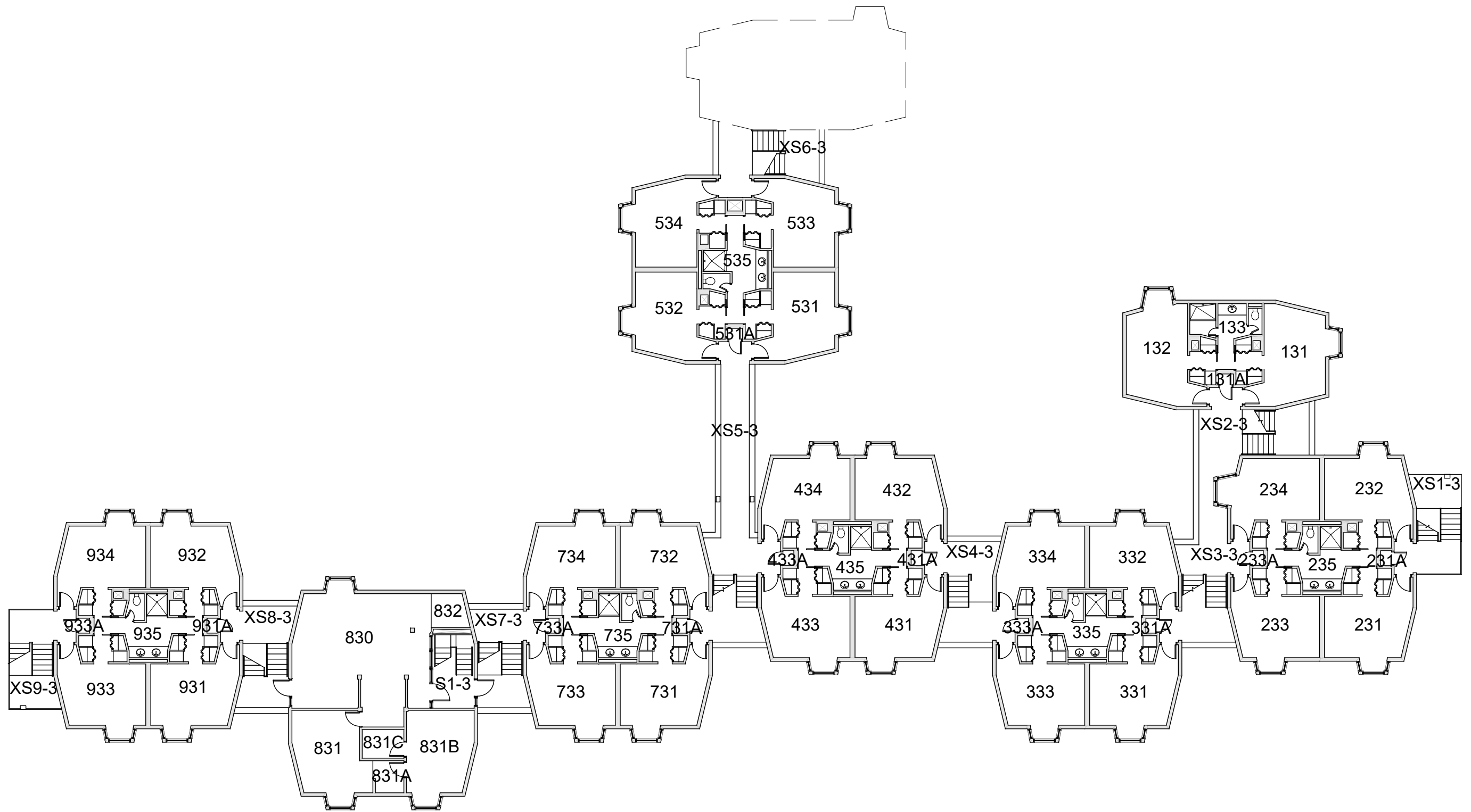
Western Washington University (WWU) makes these documents available on an "as is" basis. All warranties and representations of any kind with regard to said documents are disclaimed, including the implied warranties of merchantability and fitness for a particular use. WWU does not warrant the documents against deficiencies of any kind.



**RIDGEWAY BETA**  
FLOOR 2

Last Drawing Revision: 06/15/2023 Last Sync With AIM: 06/14/2023

|          |           |
|----------|-----------|
| Building | <b>RB</b> |
| Floor #  | 2         |



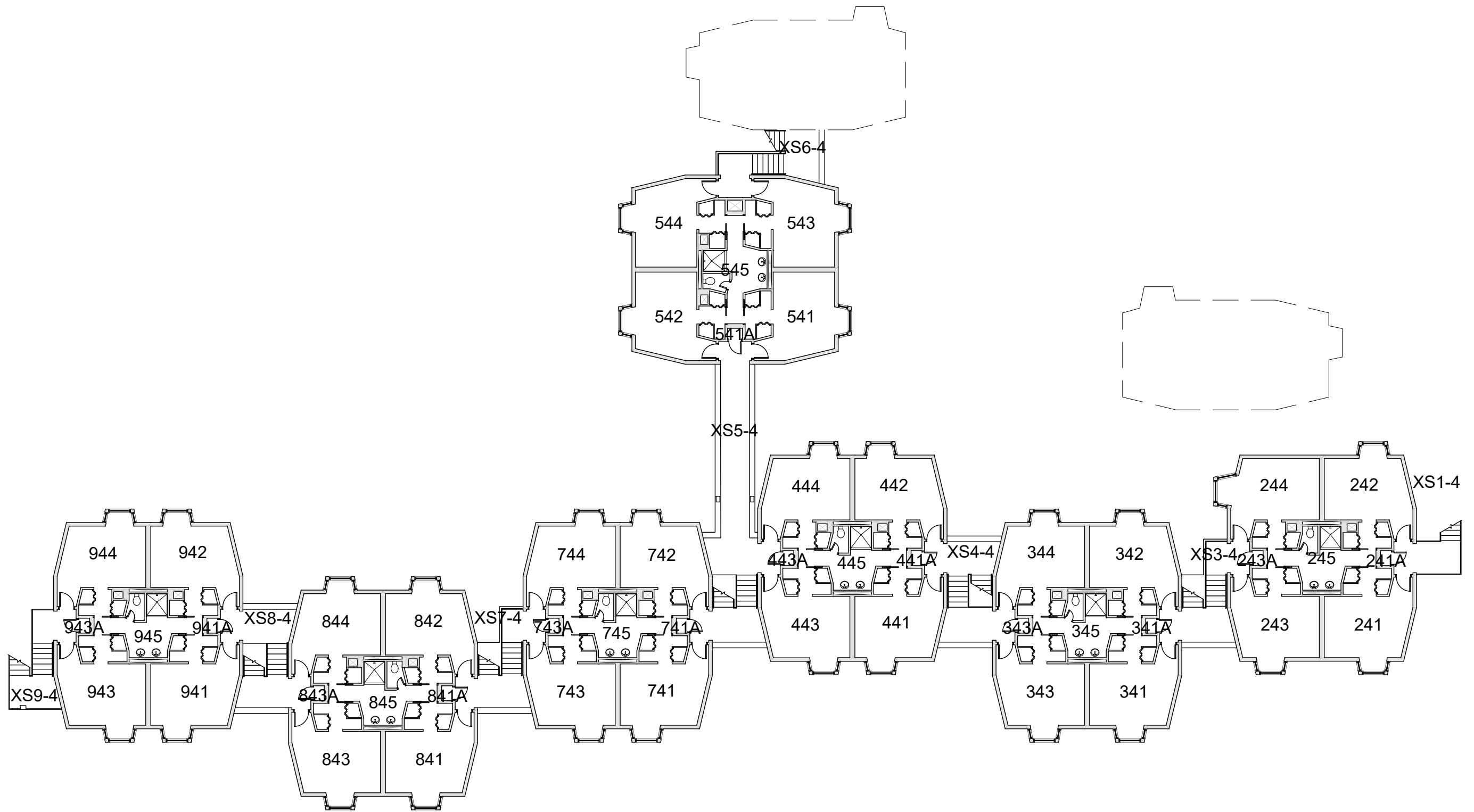
**BASE FLOOR PLAN**

Western Washington University (WWU) makes these documents available on an "as is" basis. All warranties and representations of any kind with regard to said documents are disclaimed, including the implied warranties of merchantability and fitness for a particular use. WWU does not warrant the documents against deficiencies of any kind.



|                                   |                                |
|-----------------------------------|--------------------------------|
| <b>RIDGEWAY BETA</b>              |                                |
| FLOOR 3                           |                                |
| Last Drawing Revision: 06/15/2023 | Last Sync With AIM: 06/14/2023 |

|                       |
|-----------------------|
| Building<br><b>RB</b> |
| Floor #<br><b>3</b>   |



**BASE FLOOR PLAN**

Western Washington University (WWU) makes these documents available on an "as is" basis. All warranties and representations of any kind with regard to said documents are disclaimed, including the implied warranties of merchantability and fitness for a particular use. WWU does not warrant the documents against deficiencies of any kind.



TRUE NORTH



Last Drawing Revision: 06/15/2023

**RIDGEWAY BETA**  
FLOOR 4

Last Sync With AIM: 06/14/2023

|          |           |
|----------|-----------|
| Building | <b>RB</b> |
| Floor #  | <b>4</b>  |