

Western Washington University (WWU) makes these documents available on an "as is" basis. All warranties and representations of any kind with regard to said documents are disclaimed, including the implied warranties of merchantability and fitness for a particular use. WWU does not warrant the documents against deficiencies of any kind.



TRUE NORTH

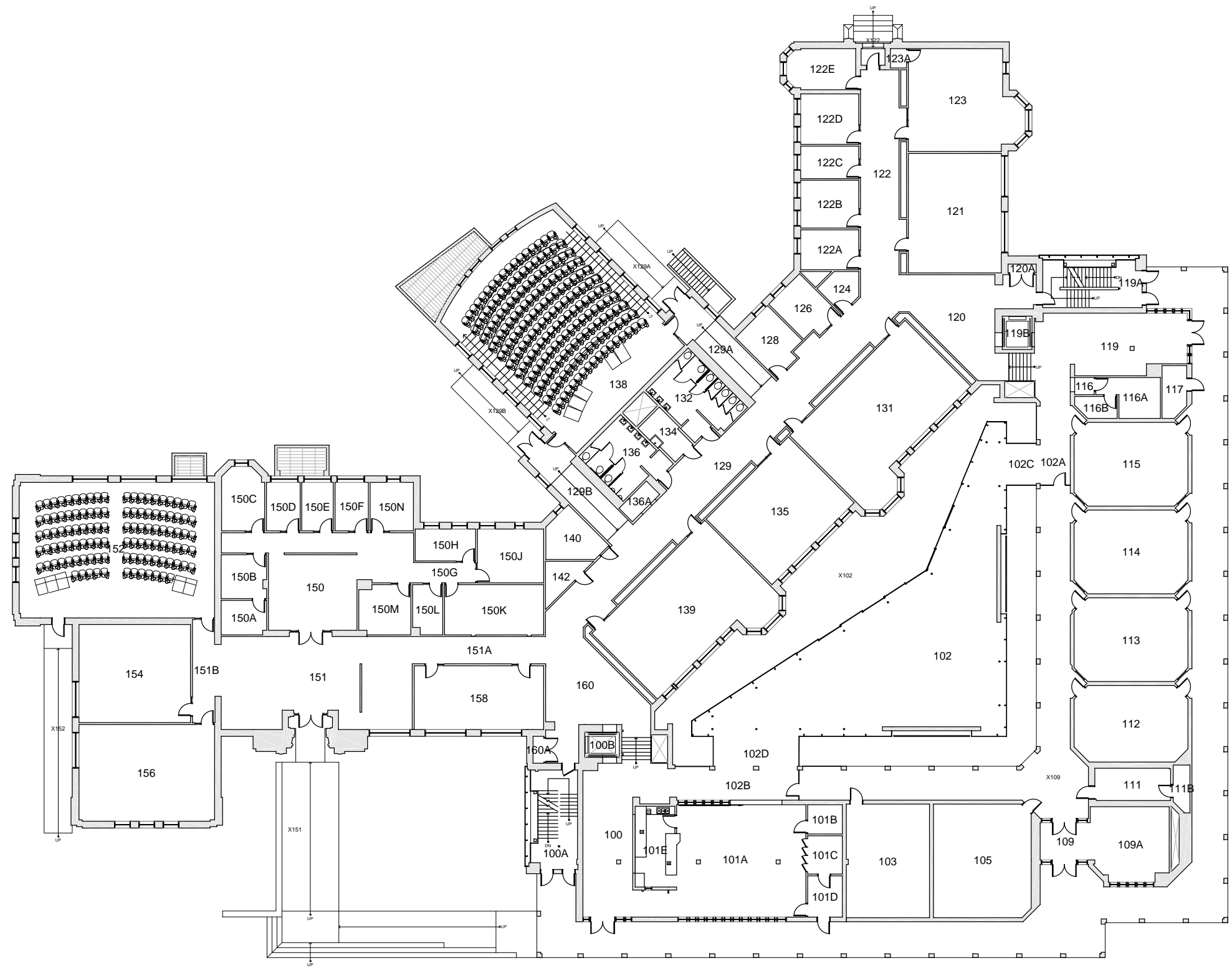


Date Revised: 03/14/2016

# MILLER HALL BASEMENT

Last Sync With FAMIS: 01/21/2015

Building/Zone  
**MH**  
Floor #  
**B**



Western Washington University (WWU) makes these documents available on an "as is" basis. All warranties and representations of any kind with regard to said documents are disclaimed, including the implied warranties of merchantability and fitness for a particular use. WWU does not warrant the documents against deficiencies of any kind.



TRUE NORTH



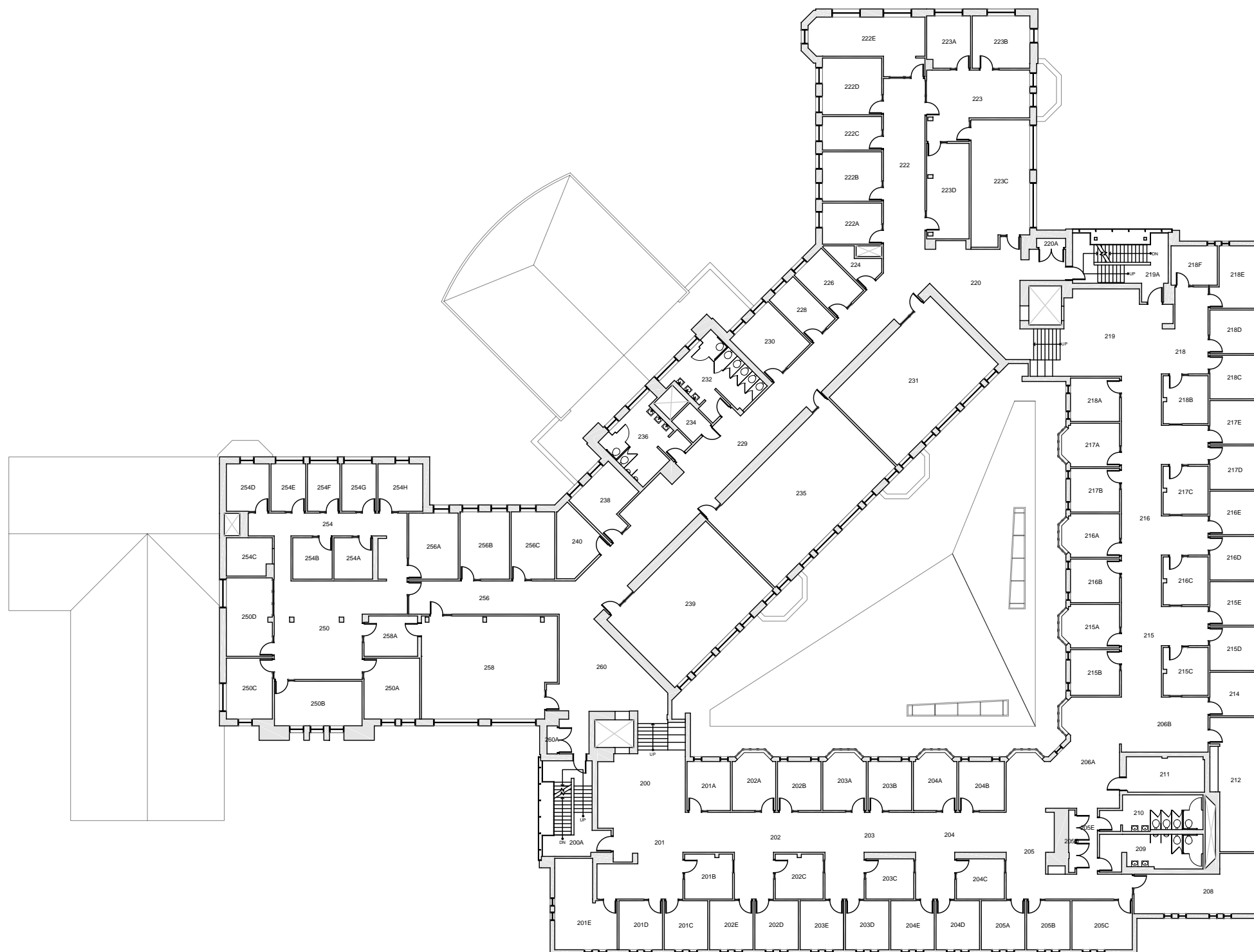
Date Revised: 03/14/2016

# MILLER HALL

## FLOOR 1

Last Sync With FAMIS: 01/21/2015

Building/Zone	MH
Floor #	1



Western Washington University (WWU) makes these documents available on an "as is" basis. All warranties and representations of any kind with regard to said documents are disclaimed, including the implied warranties of merchantability and fitness for a particular use. WWU does not warrant the documents against deficiencies of any kind.



TRUE NORTH



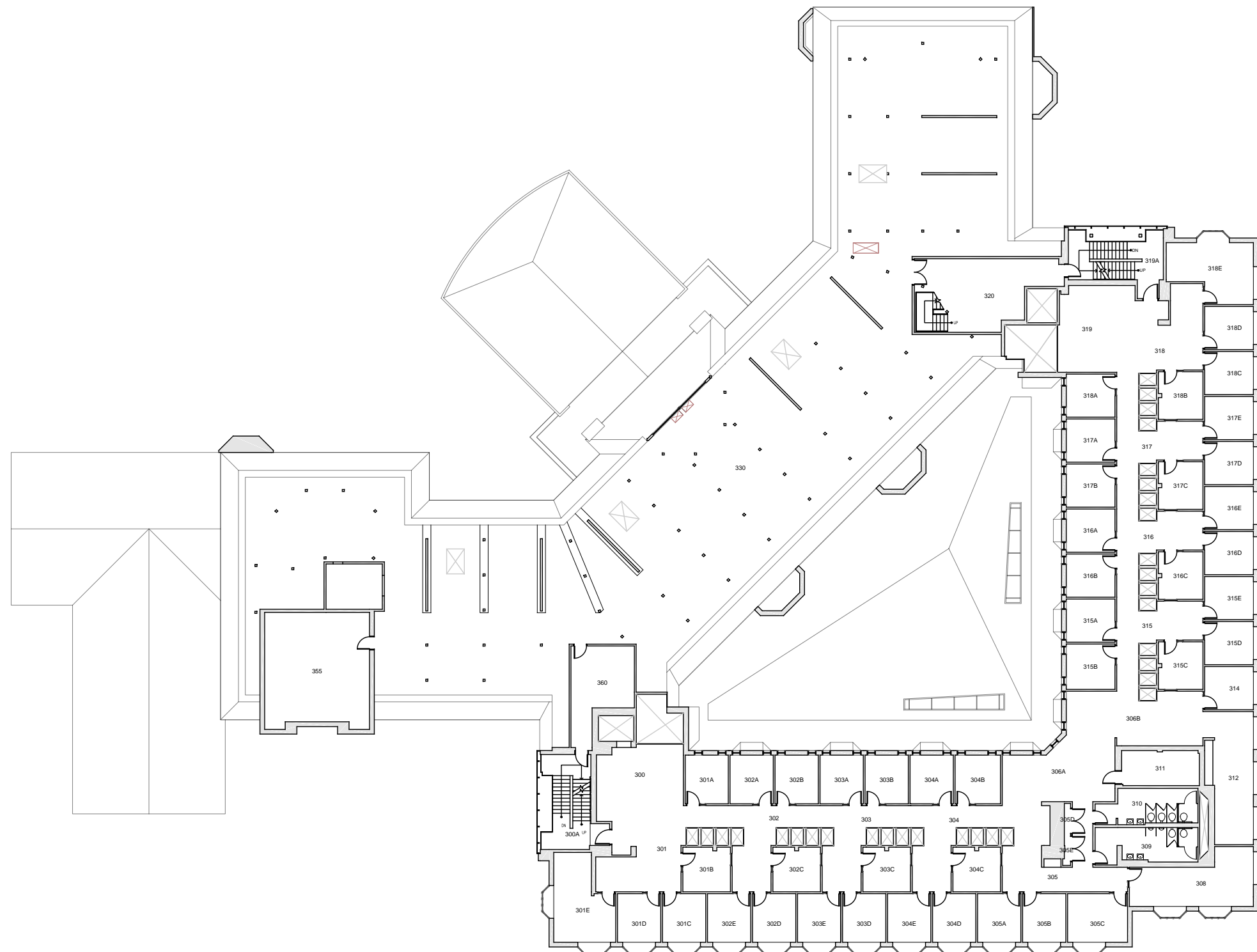
# MILLER HALL

## FLOOR 2

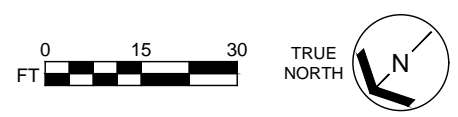
Date Revised: 03/14/2016

Last Sync With FAMIS: 01/21/2015

Building/Zone  
**MH**  
Floor #  
**2**



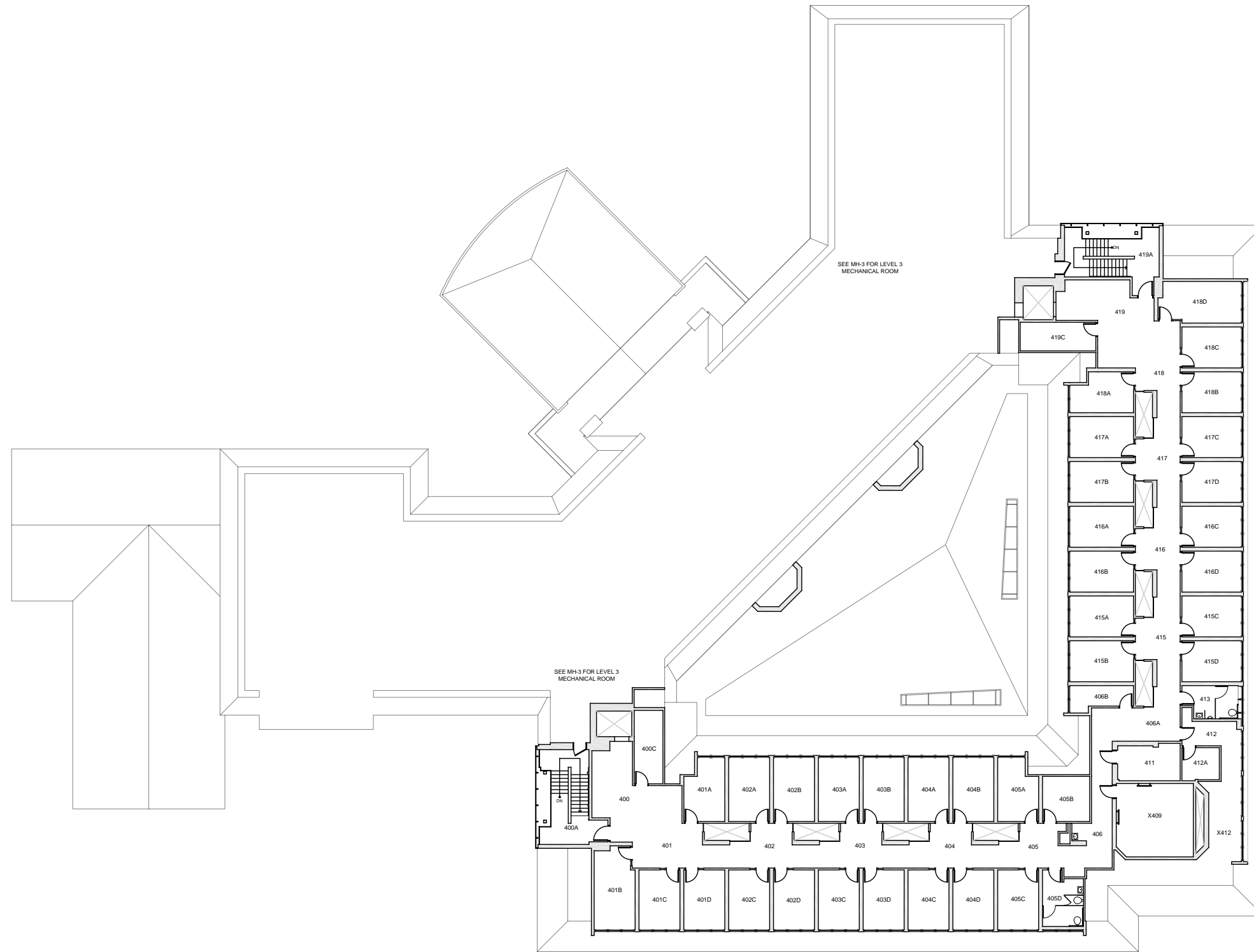
Western Washington University (WWU) makes these documents available on an "as is" basis. All warranties and representations of any kind with regard to said documents are disclaimed, including the implied warranties of merchantability and fitness for a particular use. WWU does not warrant the documents against deficiencies of any kind.



**MILLER HALL**  
FLOOR 3

Date Revised: 03/14/2016 Last Sync With FAMIS: 01/21/2015

Building/Zone  
**MH**  
Floor #  
**3**



Western Washington University (WWU) makes these documents available on an "as is" basis. All warranties and representations of any kind with regard to said documents are disclaimed, including the implied warranties of merchantability and fitness for a particular use. WWU does not warrant the documents against deficiencies of any kind.



TRUE NORTH



Date Revised: 03/14/2016

# MILLER HALL

## FLOOR 4

Last Sync With FAMIS: 01/21/2015

Building/Zone	MH
Floor #	4